



PRINCIPAL'S NEWSLETTER - OCT. '21

Sharon Elementary School :: *Care. Community. Connect.*

Mark your calendars!

- Thursday October 7, 6:30 pm via Zoom - Sharon PTO Meeting. Email hbcathcart@gmail.com for a link
- Monday October 11, all day: No School in observance of Indigenous Peoples' Day
- Tuesday October 12: Picture Day.
- Tuesday October 12, 6 pm: Sharon School Board - Regular Meeting (in-person and via Zoom. See agenda on our website, under the "School Board" page)
- October 29 - TBD - Sharon PTO Halloween Event



Dear Families,

I hope your transition to fall is a smooth one. The cooler mornings are definitely a wake-up call that winter is on the horizon. Now is a good time to check on the status of your children's winter gear to see if they fit and are ready for use. If you happen to need assistance with winter clothing, please do not hesitate to reach out to me or Mrs. Strance, our school counselor, as we have a few avenues to assist folks.

This past year we have made a transition with our email addresses. In the past, our emails had an @sharonelementary.org ending. This is not the case anymore. All staff emails end in: @wrvsu.org now. Typically the email is the first letter of the staff's first name and then their last name, followed by @wrvsu.org. For example, my current email address is khaley@wrvsu.org. I mention this because some folks are trying to reach us with the old Sharon Elementary accounts. You can find a list of staff on our school website.

This year the staff is focusing on three main areas in terms of Professional Development. They are the following:

1. Developing Restorative Practices within our school. Here is a description from the Vermont Agency of Education about what this means: In the simplest terms, whole-school restorative approaches build healthy school climates by creating space for people to understand one another and develop relationships; when things go wrong, restorative approaches create space to address needs, repair relationships, and heal. Restorative practices provide meaningful opportunities for social engagement that foster empathy and mutual responsibility for the well-being of individuals and the community. Proactive practices intentionally build trust and understanding within the community to ensure a healthy supportive climate and environment. When things go wrong, restorative practices engage those affected and create space so that individuals and communities can effectively identify, understand, and address harms and needs—this facilitates healing.
2. Using Schoolwide and Classroom-Based Assessments to Inform our Instruction. We will aim to identify data that gives us a full

.....

Stay informed:

Follow us on Facebook
@sharonelementary.org
or visit our website
www.sharonelementary.org

.....



**Useful forms and
information you can
find on our website:**

One Planet Forms

Lunch & Breakfast Menus

*Newsletters from Principal,
WRVSU, and the Nurse's
Office*

Classroom information

Calendar

picture as to who our students are and what we can do to further their development as a student. Some points include state and national assessments, classroom observations, behavioral data and classroom based assessments.

3. Developing High Quality Math Learning Blocks. Over the past few years the SU has placed a heavy emphasis on Literacy. Sharon has welcomed this, but has also identified a need to address mathematics as well. Last year we began working with a math consultant in the area of number sense as we recognized this was an area of weakness for some of our students. Now we are looking at our math learning blocks and working to design them in a way that is highly engaging, effective and enjoyable for our students.

I mention all of this because families and community members don't often realize that while educators are busy teaching during the year, they are also busy learning themselves. Learning is a lifelong process, and I'm proud that the staff here at Sharon is open to new ideas and have the awareness to analyze what they are doing and change if needed.

Have a great weekend!

Sincerely

Keenan Haley

Sharon PTO News

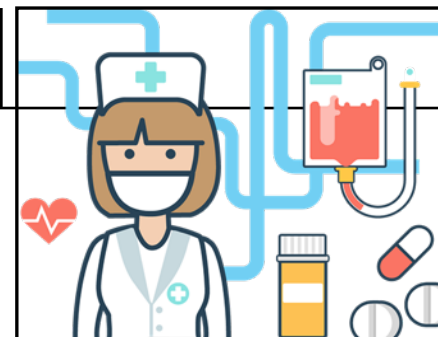
Dear Sharon Community,

Thank you so much for supporting our efforts in our latest fundraising event. With the purchase of Sharon Cyclones apparel, you helped us raise **\$755!** This money will be used to continue supporting events throughout the year, as well as supporting families in need for winter clothing.

If you have chosen the option to pick up your purchase through the PTO, we will be in contact with you as soon as they arrive. They have given us a timeline of about two weeks before the items are ready, so please be patient with us.

In the meantime, and with COVID restrictions in mind, we are actively working on plans for a way for kids in Sharon to have a memorable Halloween right here, in Sharon. If you want to join us in our efforts, please email Holly at hbcathcart@gmail.com. We hope to see you at one of our monthly meetings!

NEWS FROM THE NURSE'S OFFICE



Dear caregivers,

Oh my, oh my, what a roller coaster the past two weeks have been, but I am proud to say that students, families, and staff have taken it in stride. All of the students in the 1st and 3rd grades have been cleared to return to school, and we had no in-school transmission of Covid-19. After a week of remote learning, the 1st and 3rd graders are excited to be back at school. Clearly, we can celebrate that the Sharon Elementary School community is resilient!

When inside, wearing facemasks, frequent hand washing, and social distancing we know decreases the spread of the many viral infections, including COVID-19, but the best way to limit the spread of COVID-19 and prevent severe disease and death is with vaccination. Through much of the summer, we saw a significant drop in COVID-19 cases. However, in late summer, with the spread of the highly transmissible Delta variant, we have seen a surge in cases, including 23% occurring in children. It tends to spread through the entire household, particularly if they are unvaccinated.

Before the Delta virus, breakthrough cases of COVID-19 were extremely rare in fully vaccinated people. The Delta variant is two times more infectious than other COVID-19 strains. With that, we've seen more breakthrough cases of COVID-19 in fully vaccinated people; however, only 3.1% of Vermont breakthrough cases have been hospitalized less than 2% of breakthrough cases have died. (Breakthrough cases are more likely to be health workers or residents in long-term facilities).

During Governor Scott's weekly media briefing on Sept 21, top health officials said roughly 80% of those receiving hospital care for COVID-19 during the past week had been unvaccinated people. In intensive care units, the percentage during that period is even higher — approximately 84% of those being treated were not vaccinated.

Currently, 87.4% of eligible people in Vermont are vaccinated. The Vermont Health Commissioner Dr. Mark Levine says the Pfizer vaccine will likely be approved for children under 12 in mid-to-late October. Vaccination clinics will be provided in school as well as current sites which provide vaccinations.

According to the Vermont Health Department guideline for students with one or more symptoms of a fever (>100.3), cough, shortness of breath, sore throat, runny nose, lack of smell/taste, nausea, vomiting, diarrhea, fatigue, muscle aches, or headache, they need to stay home. If their symptoms resolve within 24 hours, they don't require Covid testing and can return to school 24 hours after their symptoms resolve. If symptoms don't resolve within 24 hours, then a student can return to school with confirmation of a negative PCR test, they don't have a fever and symptoms have improved; or it's been ten days since the symptoms first appeared.

I understand the hardship when students miss school and parents miss work due to their children being "under the weather" or having to quarantine. Although a vast majority of infections are due to viral infections, COVID-19 can present with any of the above-listed symptoms, and the most common occurring symptoms of COVID-19 in children are a runny nose, headache, cough, fatigue, and a sore throat. We have a low threshold for PCR testing because we don't want to miss a COVID-19 infection.

To help identify and prevent COVID-19 cases in school, hopefully by November, WRVSU students and staff can sign up for voluntary, in-school PCR surveillance testing. In addition, the Agency of Education will also begin a new process of providing antigen testing at our schools to decrease the impact of positivity within the school building when close contacts are identified.

In closing, I want to remind families that if you haven't already filled out the green School Annual Medical Authorization Form that Carol sent home, **please complete them and send them to school ASAP**. Thank you, I am missing the form for 69 students.

Warmly,

Nurse Jill — jlloyd@wrvsu.org — 802-282-8028

Important Dates

- HealthHub dental van
11/1-11/4
- Make-up student flu clinic
TBA
- Lion's Club vision screening
TBA